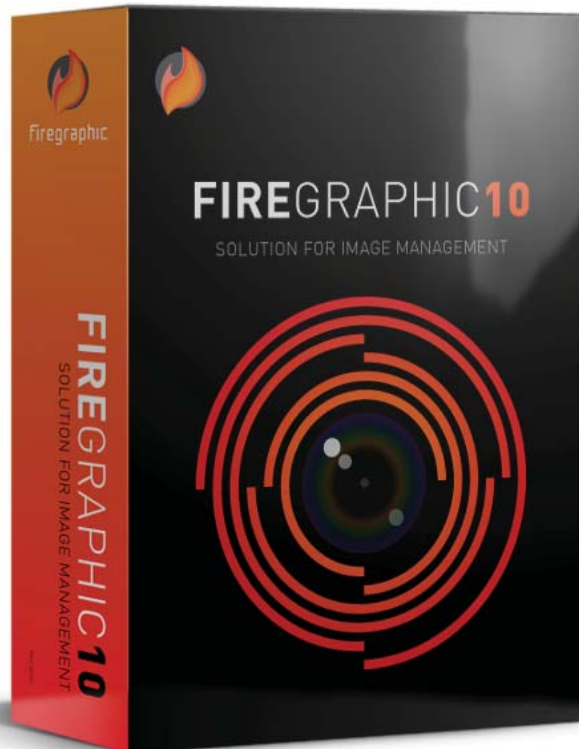




# FIREGRAPHIC 10

SOLUTION FOR IMAGE MANAGEMENT

## TUTORIAL COMPACT MODE



By default, Firegraphic starts in the Advanced Mode, which shows your folders in TreeView, the thumbnail images and the photo preview. When you need to edit your photos in your image editor like Photoshop, you can easily shrink Firegraphic into Compact Mode and align Firegraphic with your image editor. Then you can drag the photo directly to the image editor for editing.

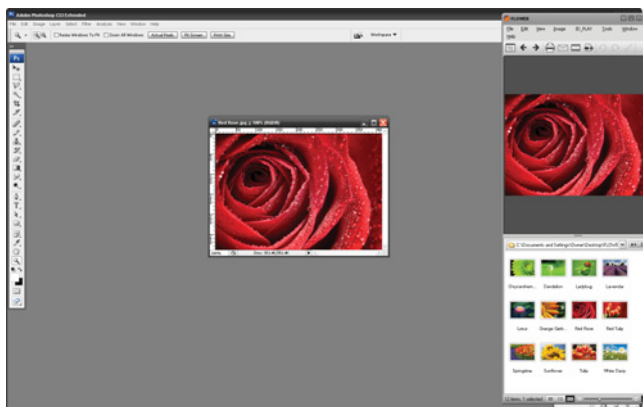
## To switch between the Compact Mode and the Advanced Mode:

Choose **File → Compact Mode** from the menu. (Shortcut: Ctrl+Alt+L)



## How's the Compact Mode works with your image editor:

1. Switch Firegraphic to **Compact Mode**. (Shortcut: Ctrl+Alt+L)
2. Align Firegraphic and your image editor side-by-side.
3. When you browse through your photo collection and see a photo you want to make enhancement, select that photo and drag it directly to your image editor.



4. The selected photo opens in your image editor and you can start editing the photo.